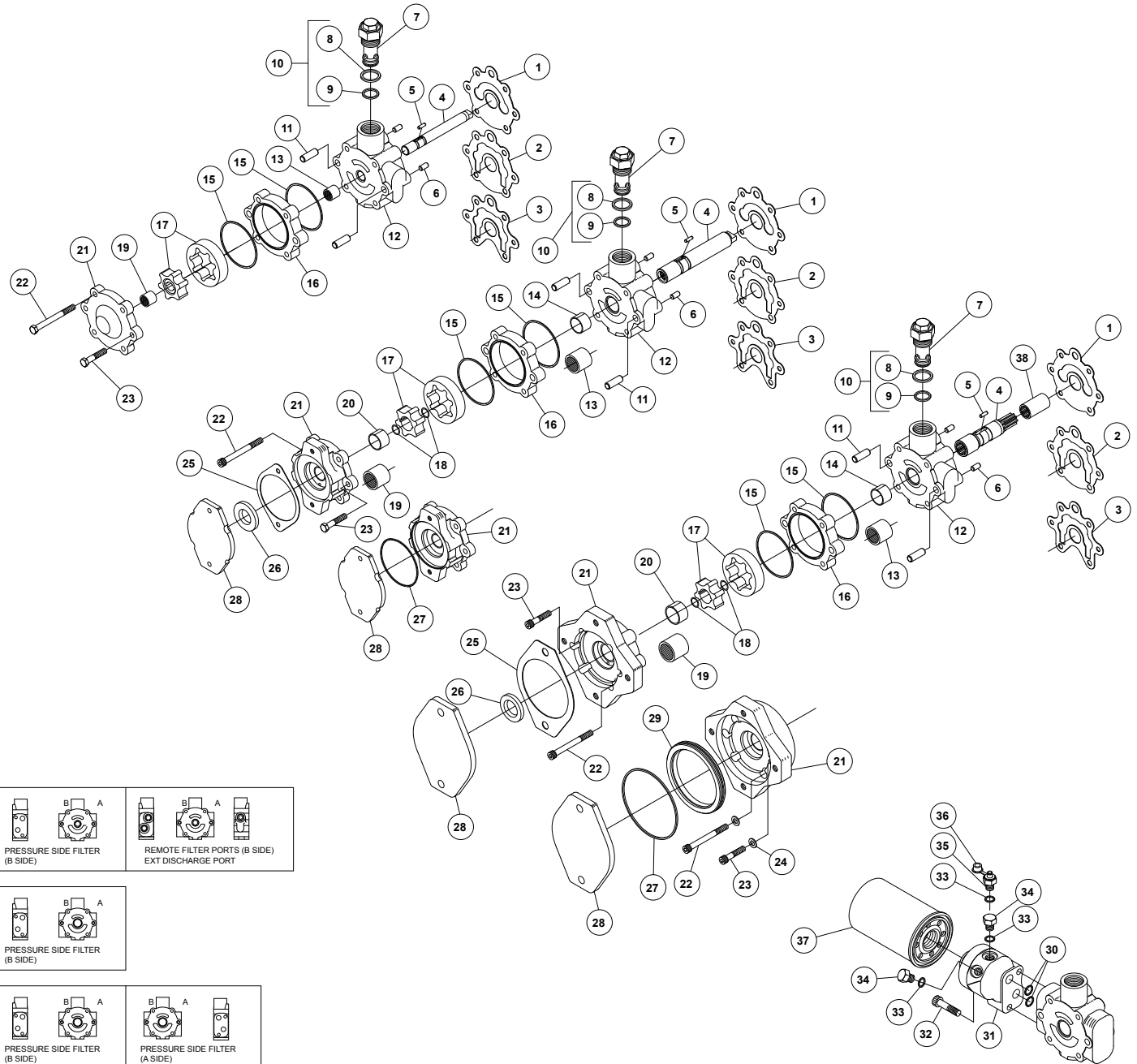
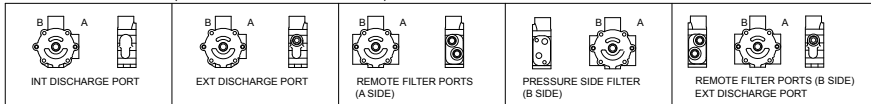


Parts List - Charge Pump

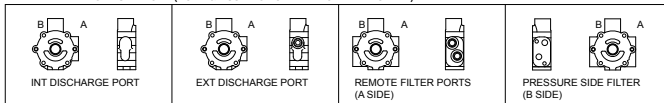
- | REF | DESCRIPTION |
|-----|--|
| 1 | GASKET, STANDARD BODY |
| 2 | GASKET, REMOTE FILTER BODY |
| 3 | GASKET, STEEL CORE |
| 4 | DRIVE SHAFT |
| 5 | DRIVE PIN |
| 6 | SOLID DOWEL |
| 7 | RELIEF VALVE (LOW PRESSURE) |
| 8 | RELIEF VALVE (LOW PRESSURE) O-RING |
| 9 | RELIEF VALVE (LOW PRESSURE) O-RING |
| 10 | RELIEF VALVE O-RING KIT |
| 11 | HOLLOW DOWEL |
| 12 | CHARGE PUMP BODY |
| 13 | BEARING, CHARGE PUMP BODY |
| 14 | BUSHING, CHARGE PUMP BODY |
| 15 | O-RING |
| 16 | SPACER |
| 17 | GEROTOR |
| 18 | RETAINING RING |
| 19 | BEARING, END COVER |
| 20 | BUSHING, END COVER |
| 21 | END COVER w/BEARING NO AUX MOUNT
END COVER w/BUSHING-DRY AUX MOUNT
END COVER w/BUSHING-WET AUX MOUNT |
| 22 | MOUNTING BOLT |
| 23 | ASSEMBLY BOLT |
| 24 | SEALING WASHER, WET END COVER |
| 25 | GASKET |
| 26 | SHAFT SEAL |
| 27 | O-RING |
| 28 | END COVER SEALING PLATE |
| 29 | SPACER |
| 30 | O-RING |
| 31 | FILTER BASE |
| 32 | FILTER BASE-WET |
| 33 | CAP SCREW |
| 34 | O-RING |
| 35 | PLUG/O-RING S/A |
| 36 | DIAGNOSTIC RECEPTACLE S/A (OPTIONAL) |
| 37 | DUST COVER |
| 38 | FILTER |
| 38 | SPLINED COUPLING |



ITEM 12- CHARGE PUMP BODY (BORE & BEARING FOR STANDARD SHAFT)



ITEM 12- CHARGE PUMP BODY (BORE & BUSHING FOR A-PAD OR B-PAD SHAFT)



ITEM 12- CHARGE PUMP BODY (BORE & BEARING FOR A-PAD SHAFT)

